

RECLAIMED DESIGNWORKS



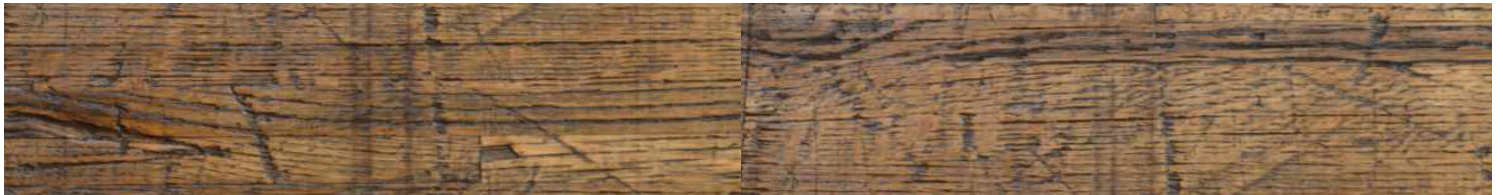
WOOD PLANKS

RECLAIMED BOXCAR PLANKS (RAW)

100% RECLAIMED

These transit planks tell a unique story all their own and add instant character and appeal to any residential or commercial project.

We have a limited supply of reclaimed boxcar planks. These oak or maple planks were used as the original flooring in railroad boxcars and were removed when the railroad car was decommissioned. These planks are beautifully worn from years of use and their size and thickness make them ideal for residential or commercial use as table tops, bar tops, islands, benches, shelving and more. Each plank is roughly 2-1/4" thick x roughly 12" wide x 8' long. Availability and exact sizes vary, so please contact a sales rep for more info on these unique products.

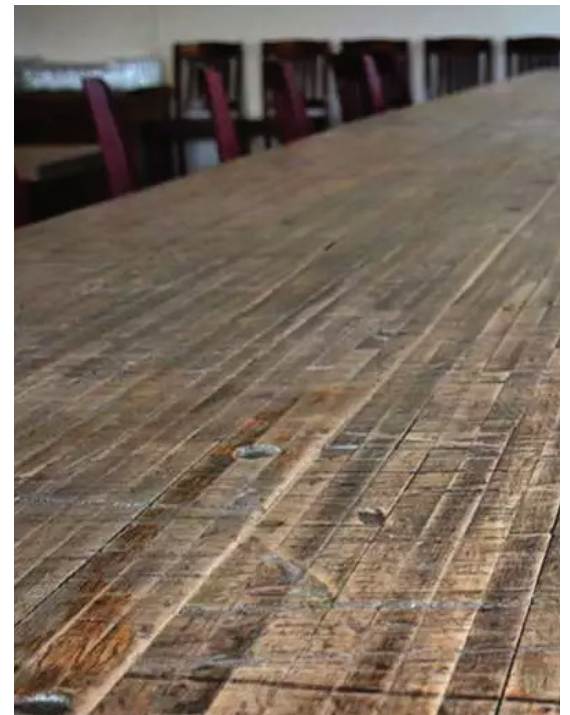


WOOD PLANK SPECS:

SPECIES	Oak and Maple
BOARD WIDTHS	12"
BOARD LENGTHS	90" - 104"
THICKNESS	2-1/2"
FINISH	Unfinished

Why You're Going To Love Them!

- Original Patina and Authentic Markings
- Unfinished, Raw Face
- Unique Story and History
- Each Plank is One-of-a-Kind, No Two are Alike
- Ideal for Island Tops, Bars, Benches & More



PLEASE NOTE: Since these planks are "unfinished", they will require some sanding & finishing